

Side grip support

For up to 6mm panel thickness.

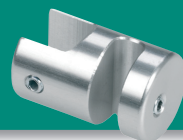
Code: **4066**
 Size: **19mm ø**
 Finishes: **SA/BA/STA**



Side grip support

For up to 10mm panel thickness.

Code: **4076**
 Size: **19mm ø**
 Finishes: **SA/BA/STA**



Twin side grip support

For up to 6mm panel.

Code: **4068**
 Size: **19mm ø**
 Finishes: **SA/BA/STA**



Shelf grip

For up to 6mm panel.
 Supplied with nylon tipped grub screw.

Code: **4010**
 Size: **19mm ø**
 Finishes: **SA/BA/STA**



Twin shelf grip

For up to 6mm panel thickness.
 Supplied with nylon tipped grub screw.

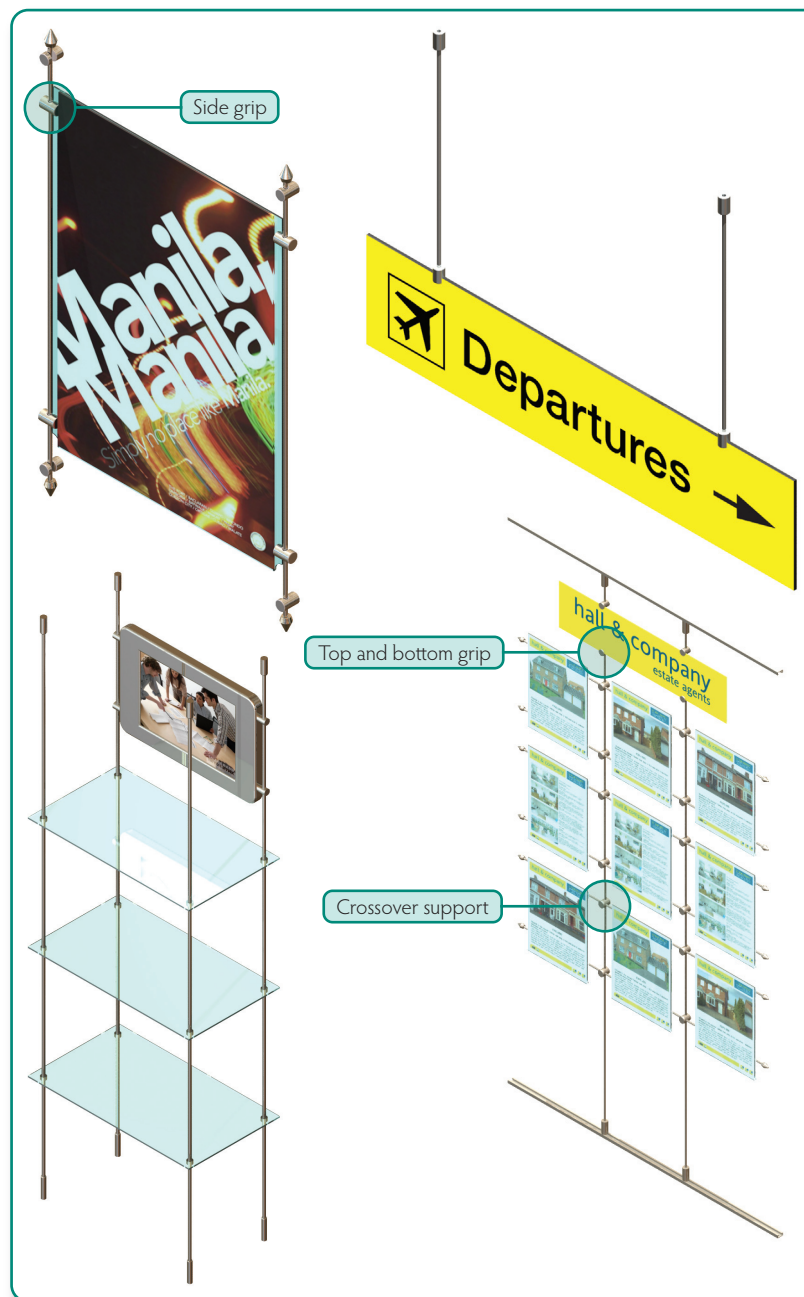
Code: **4012**
 Size: **19mm ø**
 Finishes: **SA/BA/STA**



Banner pole

Includes two end supports and 15mm ø aluminium tube. Up to 1M long.
 For sizes over 1M P.O.A.

Code: **4020**
 Size: **15mm ø** Finishes: **SA/STA**



Through hole panel support

For 3mm to 10mm panel thickness.
 Panels require 12mm ø holes.

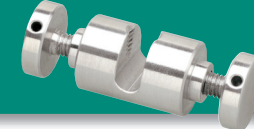
Code: **4525**
 Size: **19mm ø**
 Finishes: **SA/BA/STA**



Twin through hole panel support

For 3mm to 10mm panel thickness.
 Panels require 12mm ø holes.

Code: **4628**
 Size: **19mm ø**
 Finishes: **SA/BA/STA**



Swivel grip

For up to 6mm panel.

Code: **4018**
 Size: **19mm ø**
 Finishes: **SA/BA/STA**



Twin swivel grip

For up to 6mm panel.

Code: **4019**
 Size: **19mm ø**
 Finishes: **SA/BA/STA**



Top and bottom grip

For up to 10mm panel thickness.

Code: **4009**
 Size: **19mm ø**
 Finishes: **SA/BA/STA**



Crossover support

For 6mm horizontal rod.

Code: **4077**
 Size: **19mm ø**
 Finishes: **SA/STA**



When ordering, insert a forward slash after the code, followed by the finish code. e.g. 6011/SA.

Silver anodised
 Finish code **SA**



Brass anodised
 Finish code **BA**



Stainless anodised
 Finish code **STA**

