

Kit for fixing between floor and ceiling

Comprises: 19mm ø ceiling and floor fitting with tensioner. Allen key and fixing screws supplied.

Code: **4000**
Finishes: **SA/BA/STA**



Ceiling, floor or wall mounted kit

Comprises: 40mm ø top and bottom swivel rose with tensioner. Fixing screws supplied.

Code: **4005**
Finishes: **SA/BA/STA**



Track mounted kit

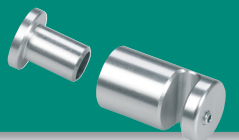
Comprises: 19mm ø track mounted rod fixing kit.

Code: **4040**
Finishes: **SA/STA**

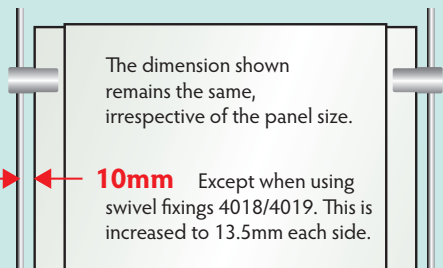


Wall mount rod holder

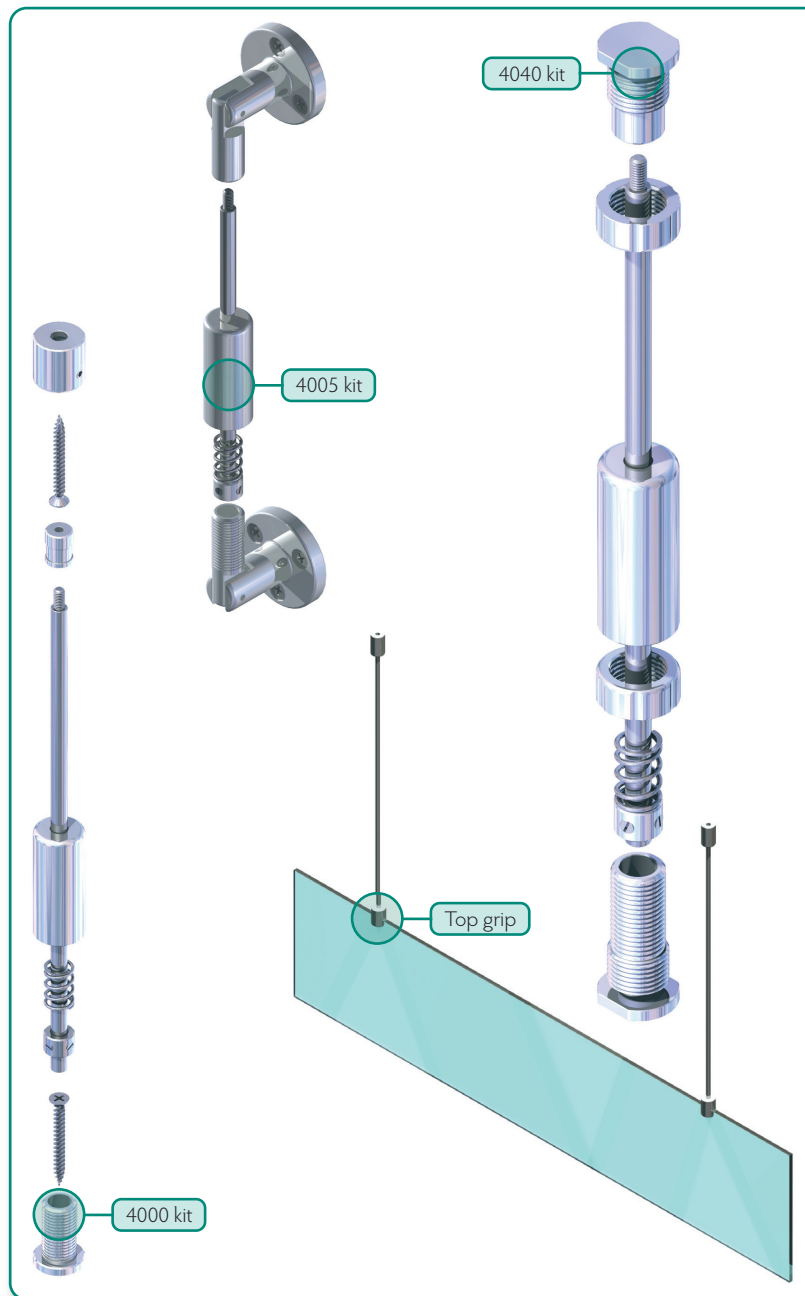
Code: **4522**
Size: **19mm ø**
Finishes: **SA/BA/STA**



INSTALLATION TIP

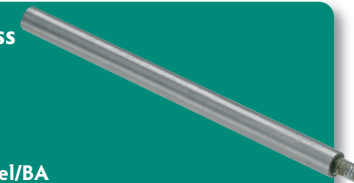


When using 6mm rod, the distance between the rod centre and the edge of the panel should be 10mm.



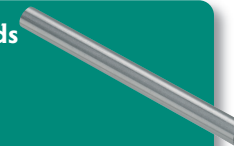
Threaded stainless steel rod

Rod length 1M.
Code: **4500**
Size: **6mm ø**
Finishes: **Stainless steel/BA**



Stainless steel rod, flush ends

Code: **4506 (500mm)**
4507 (1000mm)
4508 (1500mm)
Size: **6mm ø**
Finishes: **Stainless steel**



Top grip

For up to 6mm panel thickness.
Code: **4004**
Size: **19mm ø**
Finishes: **SA/STA**



Decorative aluminium end cap

For 6mm rod.
Code: **4504**
Size: **15mm ø**
Finishes: **SA/BA/STA**



Frame support

Code: **4016**
Size: **19mm ø**
Finishes: **SA/BA/STA**



Slimline side grip

For up to 4mm panel.
Must be inserted over end of rod – non-removable.
Code: **4011**
Size: **12mm ø**
Finishes: **SA/STA**



When ordering, insert a forward slash after the code, followed by the finish code. e.g. 6011/SA.

Silver anodised
Finish code **SA**



Brass anodised
Finish code **BA**



Stainless anodised
Finish code **STA**

