

**Twin shelf grip**

For up to 8mm panel thickness.  
Supplied with nylon tipped grub screw.

Code: **3021**  
Size: **19mm ø**  
Finishes: **SA/STA**



**Rod frame support**

Code: **3022**  
Size: **19mm ø**  
Finishes: **SA/STA**



**Support for 10mm horizontal rod between vertical rods**

Code: **3076**  
Size: **19mm ø**  
Finishes: **SA/STA**



**Crossover support**

For 10mm horizontal and vertical rod.

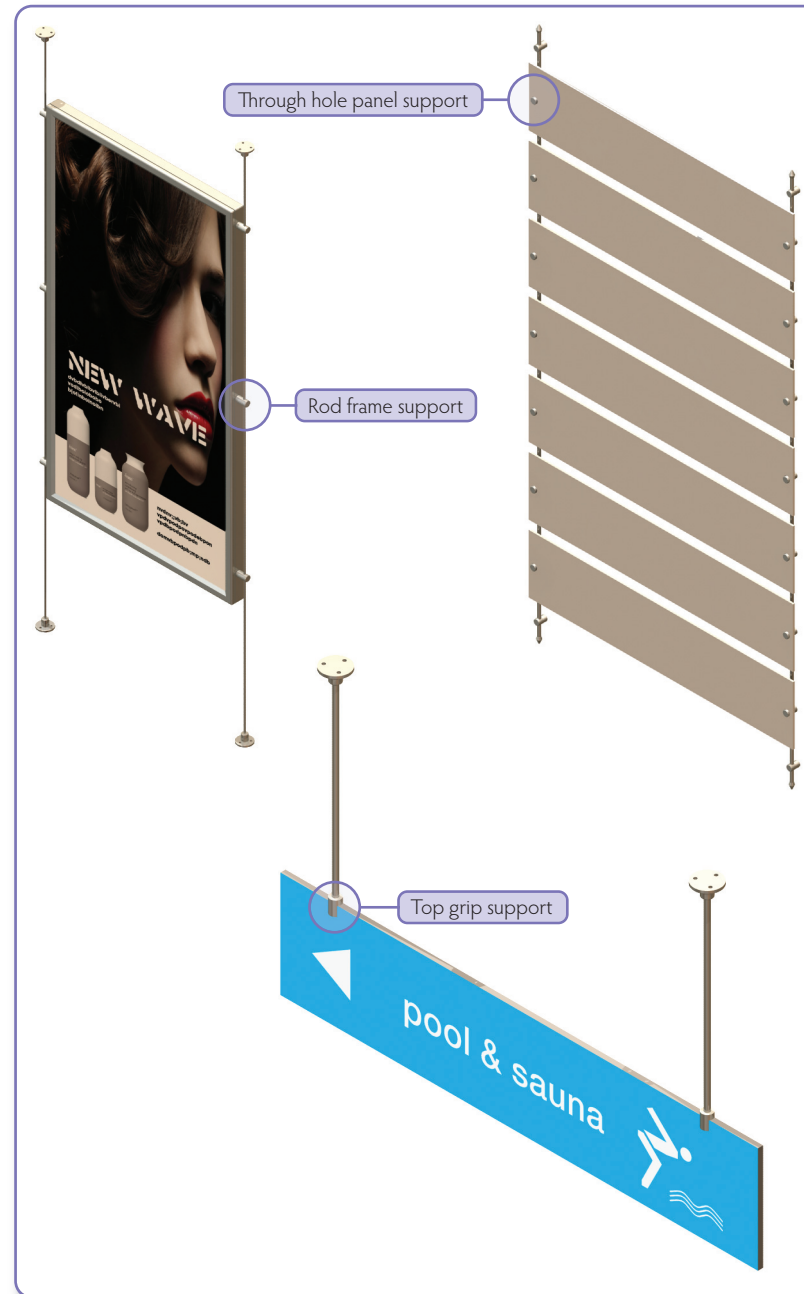
Code: **3077**  
Size: **19mm ø**  
Finishes: **SA/STA**



**Through hole panel support**

For 3-10mm panel thickness. Panels require a 12mm ø hole.

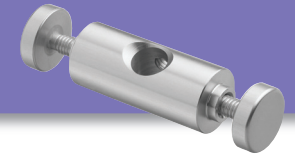
Code: **3525**  
Size: **19mm ø**  
Finishes: **SA/STA**



**Twin support**

For 3-10mm panel thickness. Panels require a 12mm ø hole.

Code: **3528**  
Size: **19mm ø**  
Finishes: **SA/STA**



**Top grip support**

For up to 6mm panel thickness.

Code: **3004**  
Size: **19mm ø**  
Finishes: **SA/STA**



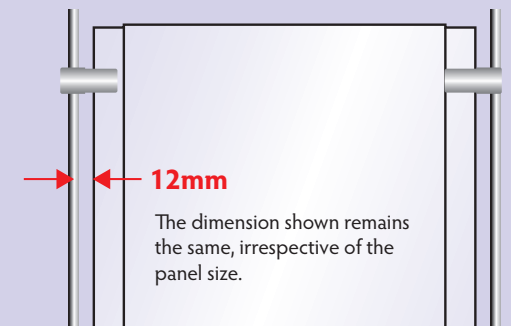
**Banner pole**

Includes two end supports and 19mm ø aluminium tube. Up to 1M long. For sizes over 1M P.O.A.

Code: **3020**  
Size: **19mm ø**  
Finishes: **SA/STA**



**INSTALLATION TIP**



When using 10mm rod, the distance between the rod centre and the edge of the panel should be 12mm each side.

When ordering, insert a forward slash after the code, followed by the finish code. e.g. 6011/SA.

**Silver anodised**  
Finish code **SA**



**Stainless anodised**  
Finish code **STA**

