

Shelf support

Shelf requires a 9mm ø hole.

Code: **6007**
 Size: **19mm ø**
 Finishes: **SA/BA/STA**



Shelf grip

For up to 6mm thickness.
 Supplied with nylon tipped grub screw.

Code: **6010**
 Size: **19mm ø**
 Finishes: **SA/BA/STA**



Shelf grip

For up to 8mm thickness.
 Supplied with nylon tipped grub screw.

Code: **6080**
 Size: **19mm ø**
 Finishes: **SA/BA/STA**



Twin shelf grip

For up to 6mm thickness. Supplied with nylon tipped grub screw.

Code: **6026**
 Size: **19mm ø**
 Finishes: **SA/BA/STA**



Through hole panel support

For 3mm to 10mm panel thickness.
 Panels require 12mm ø holes.

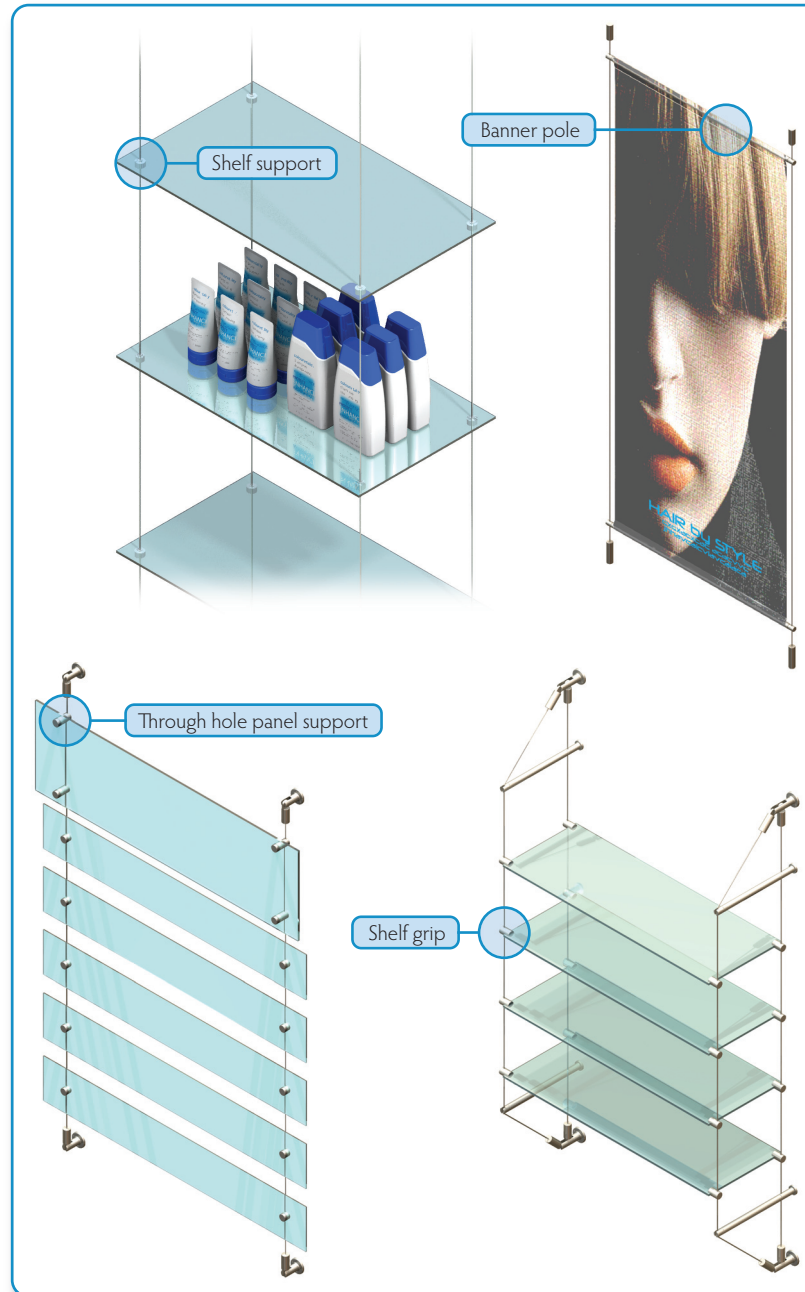
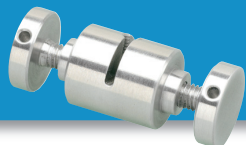
Code: **6087**
 Size: **19mm ø**
 Finishes: **SA/BA/STA**



Twin through hole panel support

For 3mm to 10mm panel thickness.
 Panels require 12mm ø holes.

Code: **6088**
 Size: **19mm ø**
 Finishes: **SA/BA/STA**



Banner pole

Includes two end supports and 15mm ø aluminium tube. Up to 1M long. Sizes over 1M P.O.A.

Code: **6020**
 Size: **15mm ø**
 Finishes: **SA/STA**



Hanging rail

Includes two end caps and universal grips. Up to 1250mm long.

Code: **6013**
 Size: **25mm ø**
 Finishes: **Chrome plated/stainless steel**



Crossover support

For a 6mm horizontal rod between cables.

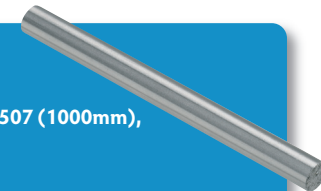
Code: **6077**
 Size: **19mm ø**
 Finishes: **SA/BA/STA**



Stainless steel rod

Flush ends.

Code: **4506 (500mm), 4507 (1000mm), 4508 (1500mm)**
 Size: **6mm ø**
 Finishes: **Stainless steel**



Decorative aluminium end cap

For 6mm rod.

Code: **4504**
 Size: **15mm ø**
 Finishes: **SA/BA/STA**



When ordering, insert a forward slash after the code, followed by the finish code. e.g. 6011/SA.

Silver anodised
 Finish code **SA**



Brass anodised
 Finish code **BA**



Stainless anodised
 Finish code **STA**

